

## MINIATURE BASIC SWITCHES

### VM VA VB Series

#### Features

- Industry standard design with up to 25 A ratings
- Choose from a variety of levers, terminals
- Variety of operating forces (15g to 400g).
- Long service life of 10,000,000 operations
- Military standard version available (VM series)
- Actuating brackets available (AC series)
- RoHS Compliant

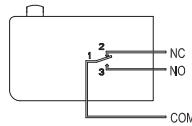
#### Specifications

Operating Speed	0.01mm TO 1m/sec(Plunger models without levers)
Operating Frequency	Mechanical: 600 ops/min; Electrical: 60 ops/min
Service Life	Mechanical: 10,000,000 (operations) Electrical: 500,000 min. (operations)
Rated Current/Voltage	0.1A, 3A, 5A, 11A, 16A 1/2HP 125/250VAC 21,25A 125/250VAC 1HP/125 2HP/250VAC
Operating Temperature	Standard -40~+85°C High temperature -40~+150°C
Dielectric Strength	1,000 VAC, 50/60 Hz for 1 min between terminals of the same polarity 2,000 VAC, 50/60 Hz for 1 min between current-carrying metal parts and ground, and between each terminal and non-current-carrying metal parts
Insulation Resistance	>100MΩ @ 500VDC
Contact Resistance	<30mΩ (initial value)
Degree of Protection	IP00

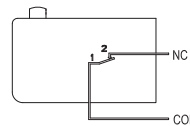
#### Selection Guide:

V	Material	Current	Actuator	Max. Operating Force	Hinge Position	Terminal Type	Contacts Configuration	Contacts Material
A	Plastic	01 0.1A	None Pin plunger	A 15g	None Far from plunger	A 0.187x0.020	None 1NO/1NC	None Silver
B	Phenolic	1 1A	1 Short straight lever	B 25 max	T Near plunger	B 0.187x0.020 spread	1 1NO	K Gold plated
M	Military	3 3A	2 Straight lever	C 50g max		C 0.250x0.032	2 1NC	
		5 5A	3 Long straight lever	D 75g max		D 0.250x0.032 spread		
		11 11A	4 Simulated roller lever	E 150g max		E Short		
		16 16A	5 Short metal roller lever	F 225g max		H Solder lug		
		21 21A	5P Short plastic roller lever	G 300g max		S Screw		
		25 25A	6 Metal roller lever	H 400g max				
			6P Plastic roller lever					
			7 Simulated roller lever (Long)					
			8 Custom lever					

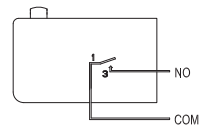
SPDT



SPST-NC

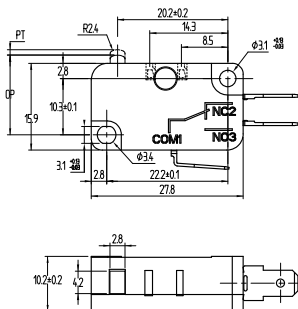


SPST-NO

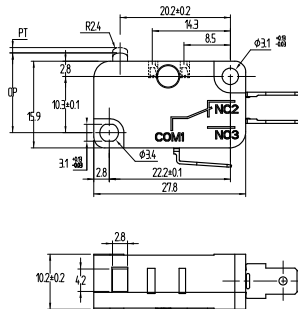


#### Pictures and Drawings:

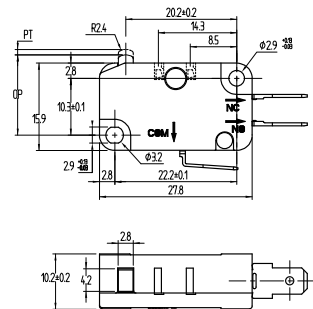
VA



VB



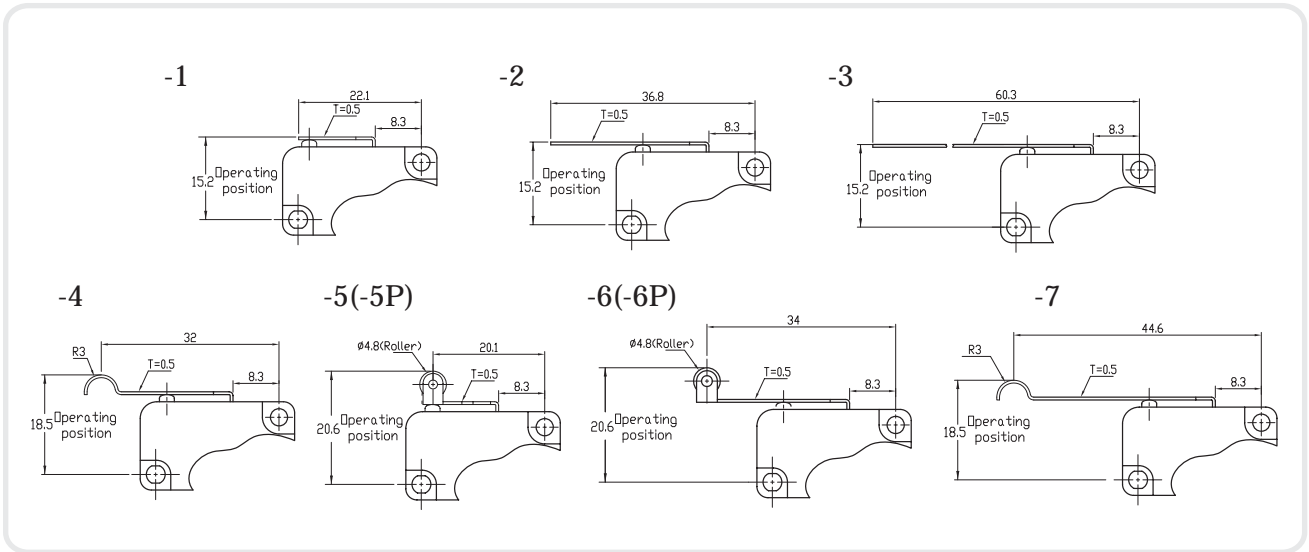
VM



## MINIATURE BASIC SWITCHES

VM VA VB Series

Actuators:



Terminals:

