

SNAP ACTION INDUSTRIAL SWITCHES SW-3 SERIES (DPDT)

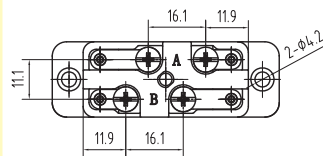
Specifications

Operating Speed	0.01mm-1m/sec
Operating Frequency	Mechanical: 240ops/min Electrical: 20 ops/min
Insulation Resistance	>100MΩ@500V DC
Contact Resistance	<15mΩ
Rated Current/Voltage	A600 Q300 I _{th} =15A
Dielectric Strength	1000VAC for 1 min between current carrying parts 2500VAC for 1 min between non-current carrying parts
Service Life	Mechanically 1.0 x 10 ⁷ (operations) Electrically 5 x 10 ⁵ (operations)
Operating Temperature	-25~+80°C (-13~176°F)
Humidity	< 95%RH
Degree of Protection	IP00/IP63

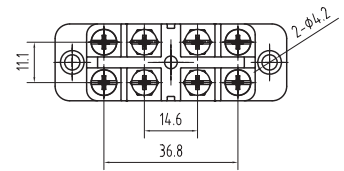
Definitions of Operating Characteristics

OF	Operating Force	PT	Pretravel
RF	Releasing Force	MD	Movement Differential
OT	Overtravel	OP	Operating Position
TT	Total Travel	PO	Travel to Positive Opening

SW-31



SW-32

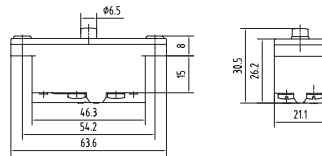


Rated Current and Voltages

Switch Type	Contacts	AC 50 or 60 Hz						DC			AC or DC Continuous Carrying Amperes
		Voltage	Inductive 35% Power Factor				Resistive 75% Make and Break Amperes	Voltage	Inductive and Resistive Make and Break Amperes		
			Make		Break				Single Pole	Double Pole	
			A	VA	A	VA					
SW3101	SPDT	120	40	4800	15	1800	15	0.5	0.25	15	
		240	20	4800	10	2400	10	0.25	0.1	15	
		480	10	4800	6	2880	6	0.05	—	15	
		600	8	4800	5	3000	5	—	—	15	
SW3201	DPDT	120	30	3600	3	360	3	1.0	0.2	10	
		240	15	3600	1.5	360	1.5	0.3	0.1	10	
		480	7.5	3600	0.75	360	0.75	0.1	—	10	
		600	6	3600	0.6	360	0.6	—	—	10	

Dimensions Unit: mm

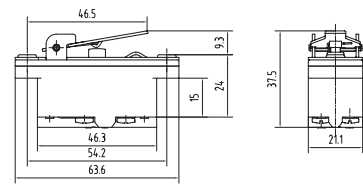
SW-3101



Operating Characteristics

- OF_{max} 3.5N
- PT_{max} 2mm
- TT_{min} 3.8mm
- MD_{max} 1.2mm

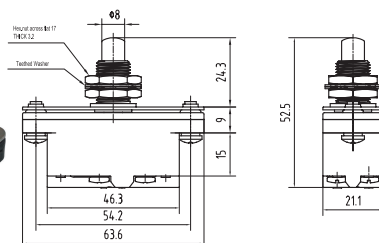
SW-3102



Operating Characteristics

- OF_{max} 4N
- PT_{max} 5mm
- TT_{min} 6mm
- MD_{max} 2mm

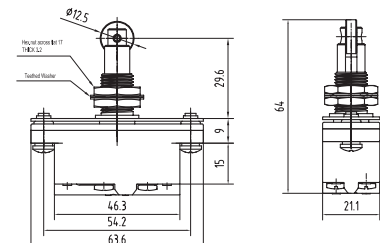
SW-3121



Operating Characteristics

- OF_{max} 3.5N
- PT_{max} 2mm
- TT_{min} 7mm
- MD_{max} 1.2mm

SW-3132



Operating Characteristics

- OF_{max} 3.5N
- PT_{max} 2mm
- TT_{min} 8mm
- MD_{max} 1.2mm

SNAP ACTION INDUSTRIAL SWITCHES SW-3 SERIES (DPDT)

SW-3151

Operating Characteristics

- OF_{max} 4N
- PT_{max} 5mm
- TT_{min} 6mm
- MD_{max} 2mm

SW-3251

Operating Characteristics

- OF_{max} 4.5N
- PT_{max} 4.5mm
- TT_{min} 5mm
- MD_{max} 2mm

SW-3162

Operating Characteristics

- OF_{max} 4N
- PT_{max} 5mm
- TT_{min} 6mm
- MD_{max} 2mm

SW-3201

Operating Characteristics

- OF_{max} 4N
- PT_{max} 2mm
- TT_{min} 3.8mm
- MD_{max} 1.2mm

SW-3202

Operating Characteristics

- OF_{max} 4.5N
- PT_{max} 4.5mm
- TT_{min} 5mm
- MD_{max} 2mm

SW-3221

Operating Characteristics

- OF_{max} 4N
- PT_{max} 2mm
- TT_{min} 7mm
- MD_{max} 1.2mm

SW-3232

Operating Characteristics

- OF_{max} 4N
- PT_{max} 2mm
- TT_{min} 8mm
- MD_{max} 1.2mm

SW-3262

Operating Characteristics

- OF_{max} 4.5N
- PT_{max} 4.5mm
- TT_{min} 5mm
- MD_{max} 2mm